

0.61mm THK COLORBOND®
LCP SPANLOCK® METAL ROOFING

0.48mm THK ZINCALUME®
LCP MULTIDECK® METAL SUBSTRATE

1 LAYER OF 50mm THK INSULATION,
DENSITY 100Kg/m³

0.61mm THK COLORBOND®
LCP Zed-END FLASHING

0.61mm THK COLORBOND®
LCP BARGE FLASHING

1.00mm THK LCP GALV. SUB-GIRT
@ 600mm c/c / EVERY PURLIN

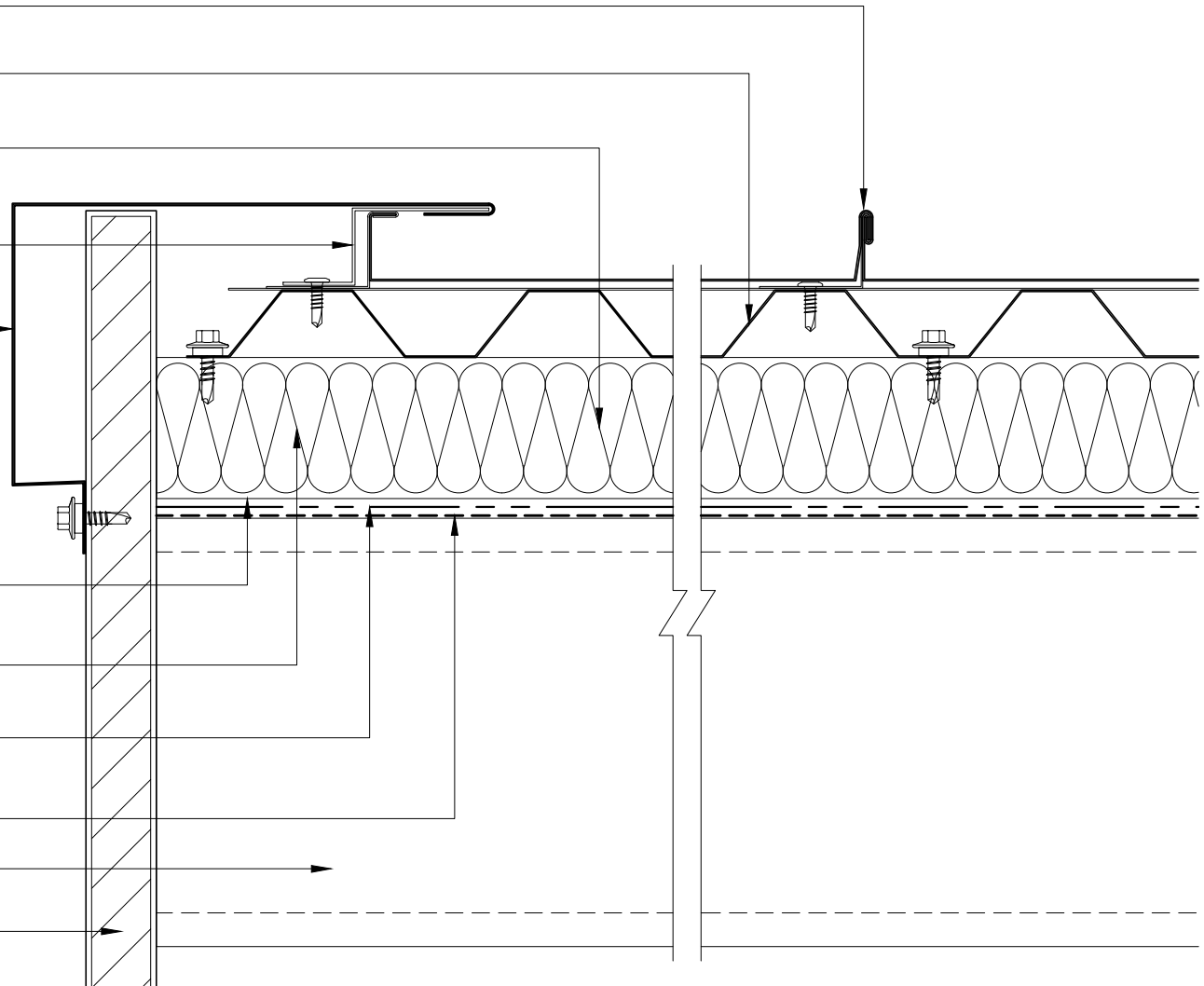
1 LAYER OF 50mm THK INSULATION,
DENSITY 100Kg/m³

1 LAYER OF DOUBLE SIDED ALUM FOIL
VAPOUR/RADIANT BARRIER

1 LAYER OF ROOF MESH 3315

LCP HIGH TENSILE GALV. PURLIN

LCP VARIOUS CEILING/FASCIA PANEL



LCP BUILDING PRODUCTS PTE. LTD.

No. 6 Gul Circle, Singapore 629562
Telephone: (65) 6865 1550 Facsimile: (65) 6861 4218 Email: lcp@lcp.sg
A member of LCP Group of Companies (CO. No. 200009173C)

REV	ISSUES/REVISIONS	DATE	BY

—COPYRIGHT RESERVED THIS DRAWING AND DESIGN IS AT ALL TIMES THE PROPERTY OF LCP—BUILDING PRODUCTS PTE. LTD. AND CANNOT BE USED WITHOUT LCP—BUILDING PRODUCTS PTE. LTD. WRITTEN CONSENT.

—ALL DIMENSIONS MUST BE CHECKED BY THE CONTRACTOR BEFORE CONSTRUCTION.

—THIS DETAIL DRAWING IS PURELY INDICATIVE AND IS A CONCEPTUAL DESIGN ONLY. ALL DESIGN MUST BE CHECKED BY LCP—BUILDING PRODUCTS PTE. LTD. TECHNICAL DEPARTMENT. PLEASE NOTE THIS DETAIL IS NOT A FINAL DESIGN AND CANNOT BE USED UNLESS AUTHORISED BY LCP—BUILDING PRODUCTS PTE. LTD..

PROJECT: LCP SPANLOCK STANDARD DETAIL		
DRAWING TITLE: BARGE FLASHING DETAIL-2		
DWG. BY: BC	DATE: AUG 2005	PROJECT NO.:
CHKD. BY: MP	SCALE: N.T.S.	SHEET: 7 of 39